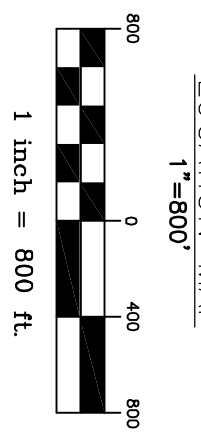
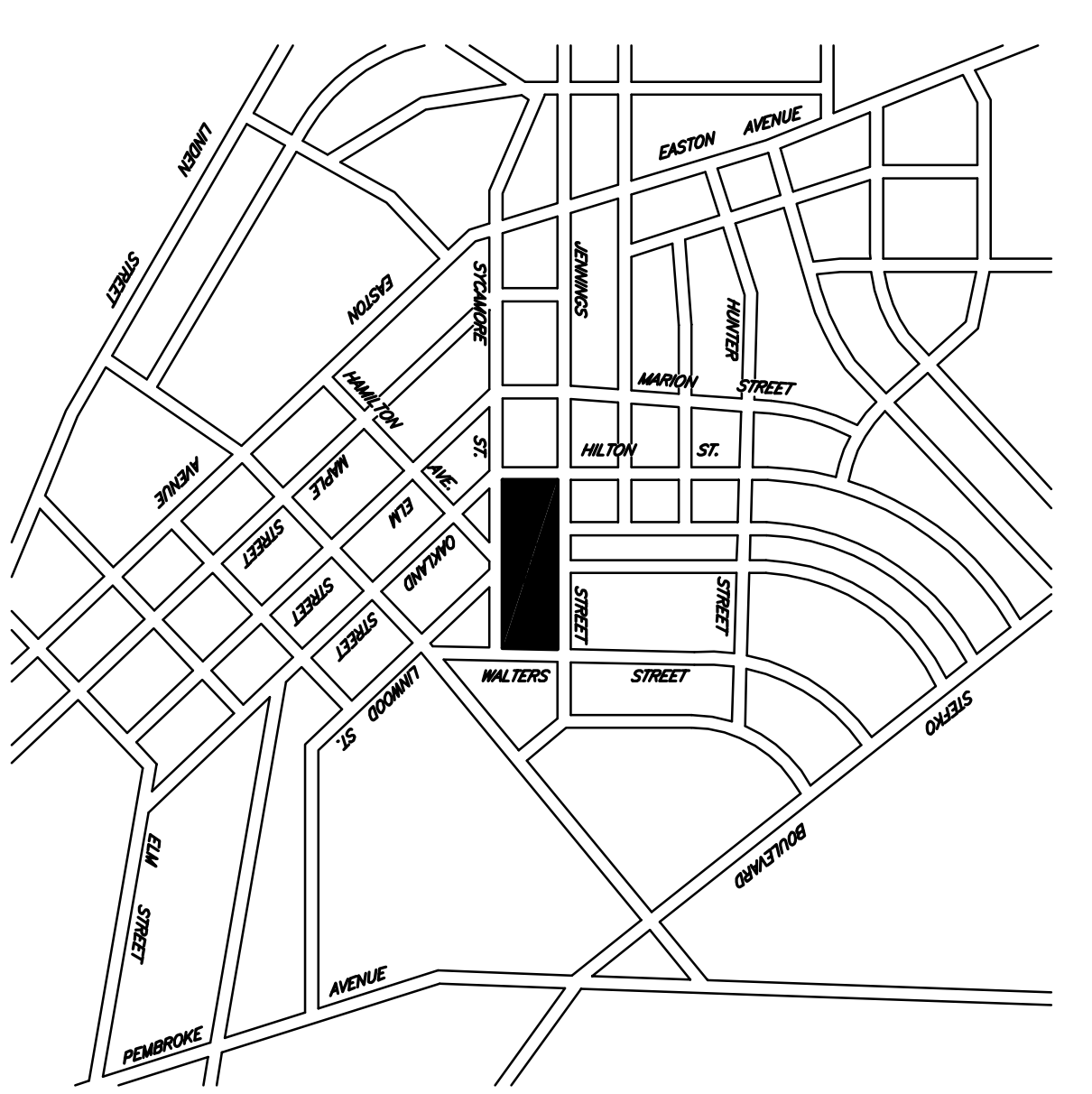
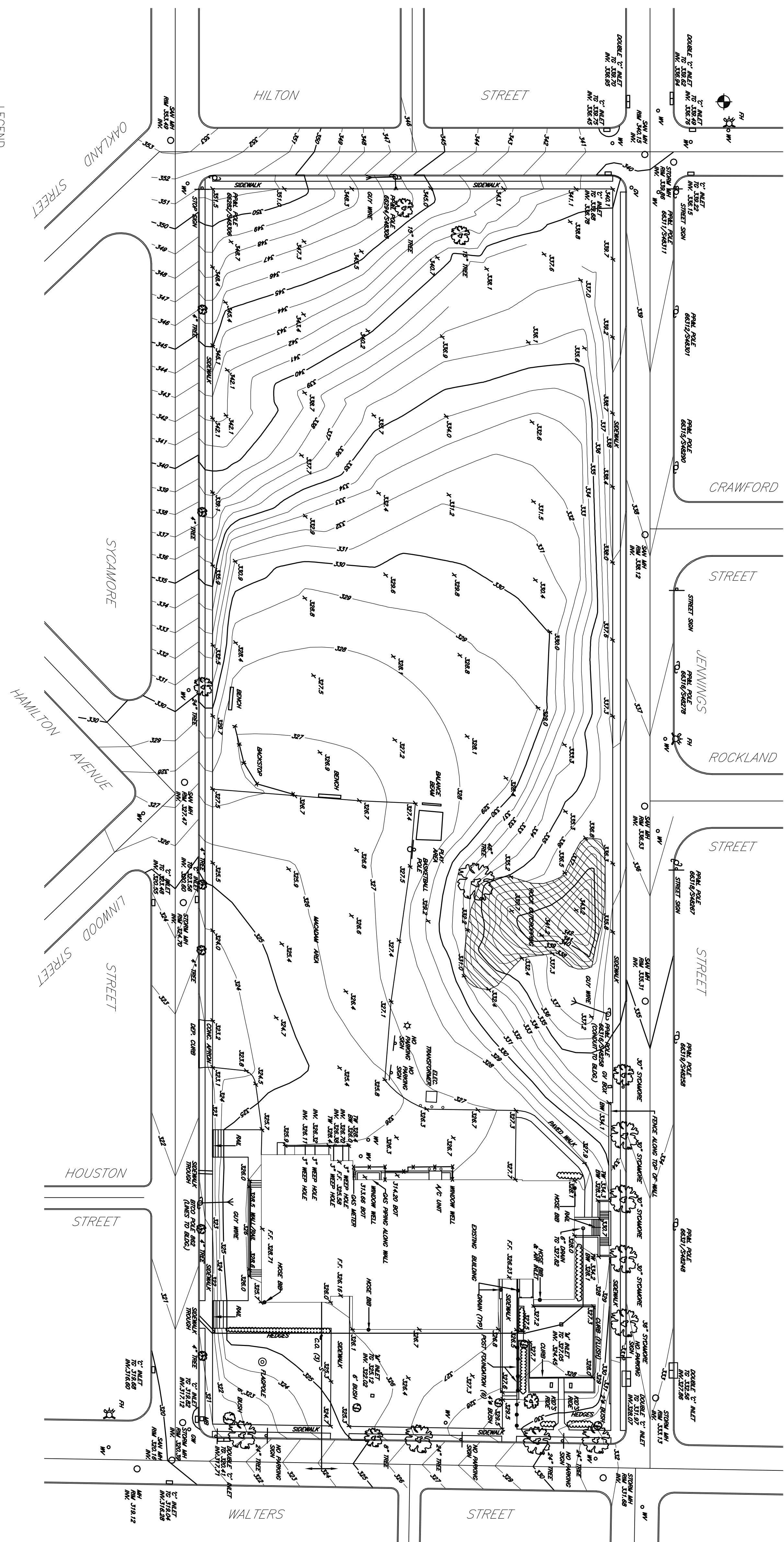


LEGEND

—	PROPERTY LINE
—	BUILDING SETBACK LINE
—	EXISTING GAS LINE
—	EXISTING STORM SEWER
—	EXISTING SANITARY SEWER
—	EXISTING CONDUIT
—	EXISTING SANITARY MANHOLE
—	EXISTING STORM MH
—	EXISTING WATER VALVE
—	EXISTING GAS VALVE
—	EXISTING FIRE HYDRANT
—	EXISTING TREE



GENERAL NOTES

- ALL USERS OF THIS PLAN ARE REFERRED TO AND CAUTIONED TO EXERCISE EXTREME CARE IN THE USE OF THIS PLAN. THE USER IS ADVISED THAT THIS PLAN IS THE PROPERTY OF THE ENGINEER AND IS NOT TO BE REPRODUCED OR TRANSMITTED IN ANY FORM OR BY ANY MEANS, ELECTRONIC OR MECHANICAL, INCLUDING PHOTOCOPYING, RECORDING, OR BY ANY INFORMATION STORAGE AND RETRIEVAL SYSTEM, WITHOUT THE WRITTEN PERMISSION OF THE ENGINEER.
- THE USER ASSUMES ALL LIABILITY FOR THE ACCURACY OF THE INFORMATION SHOWN ON THIS PLAN AND FOR THE LOCATION OF UNDERGROUND UTILITIES OR OTHER UNDERGROUND FEATURES.
- THIS PLAN DEPICTS EXISTING CONDITIONS AND PROPOSED CONDITIONS. THE USER IS RESPONSIBLE FOR VERIFYING THE LOCATION AND DEPTH OF ALL UTILITIES AND FOR OBTAINING ALL NECESSARY PERMITS AND APPROVALS FROM THE APPROPRIATE AGENCIES. THE USER IS RESPONSIBLE FOR OBTAINING ALL NECESSARY PERMITS AND APPROVALS FROM THE APPROPRIATE AGENCIES.
- CONSTRUCTION SHALL BE IN ACCORDANCE WITH THE LATEST EDITIONS OF THE PENNSYLVANIA DEPARTMENT OF TRANSPORTATION AND HIGHWAY CONSTRUCTION SPECIFICATIONS AND THE PENNSYLVANIA DEPARTMENT OF ENVIRONMENTAL PROTECTION CONSTRUCTION SPECIFICATIONS.
- CONSTRUCTION SHALL BE IN ACCORDANCE WITH THE LATEST EDITIONS OF THE PENNSYLVANIA DEPARTMENT OF TRANSPORTATION AND HIGHWAY CONSTRUCTION SPECIFICATIONS AND THE PENNSYLVANIA DEPARTMENT OF ENVIRONMENTAL PROTECTION CONSTRUCTION SPECIFICATIONS.
- CONSTRUCTION SHALL BE IN ACCORDANCE WITH THE LATEST EDITIONS OF THE PENNSYLVANIA DEPARTMENT OF TRANSPORTATION AND HIGHWAY CONSTRUCTION SPECIFICATIONS AND THE PENNSYLVANIA DEPARTMENT OF ENVIRONMENTAL PROTECTION CONSTRUCTION SPECIFICATIONS.
- CONSTRUCTION SHALL BE IN ACCORDANCE WITH THE LATEST EDITIONS OF THE PENNSYLVANIA DEPARTMENT OF TRANSPORTATION AND HIGHWAY CONSTRUCTION SPECIFICATIONS AND THE PENNSYLVANIA DEPARTMENT OF ENVIRONMENTAL PROTECTION CONSTRUCTION SPECIFICATIONS.
- CONSTRUCTION SHALL BE IN ACCORDANCE WITH THE LATEST EDITIONS OF THE PENNSYLVANIA DEPARTMENT OF TRANSPORTATION AND HIGHWAY CONSTRUCTION SPECIFICATIONS AND THE PENNSYLVANIA DEPARTMENT OF ENVIRONMENTAL PROTECTION CONSTRUCTION SPECIFICATIONS.
- CONSTRUCTION SHALL BE IN ACCORDANCE WITH THE LATEST EDITIONS OF THE PENNSYLVANIA DEPARTMENT OF TRANSPORTATION AND HIGHWAY CONSTRUCTION SPECIFICATIONS AND THE PENNSYLVANIA DEPARTMENT OF ENVIRONMENTAL PROTECTION CONSTRUCTION SPECIFICATIONS.
- CONSTRUCTION SHALL BE IN ACCORDANCE WITH THE LATEST EDITIONS OF THE PENNSYLVANIA DEPARTMENT OF TRANSPORTATION AND HIGHWAY CONSTRUCTION SPECIFICATIONS AND THE PENNSYLVANIA DEPARTMENT OF ENVIRONMENTAL PROTECTION CONSTRUCTION SPECIFICATIONS.

D'HUY Engineering, Inc.
 CONSULTING ENGINEERS: Project Management | Facilities Engineering
 Structural Design & Analysis | Forensic Engineering

One East Broad Street, Bethlehem, PA. 18018
 610.865.3000 • (610) 861-0181 fax • www.dhuy.com

BETHLEHEM AREA SCHOOL DISTRICT
 BETHLEHEM PENNSYLVANIA

EDUCATION CENTER

SITE PLAN

No.	Date	By

Drawing No.	Appd.
13198	
Date:	11/28/11
Scale:	1"=40'-0"
Job No.	13198
Drawing No.	SP1