

Inside Story Headline on RECYCLING

Americans use more “stuff” than anyone on earth. Every day each of us throws away approximately four pounds of trash. Most of our trash is trucked to landfills. This creates more problems; we are running out of room in our landfills, using up natural resources to make things that we throw away, and some of our trash is hazardous.



The law requires adherence to recycling. In order to make this program work we need all staff and students to participate in the program that is in place. *Recyclable materials must be source separated in all areas within the building by teachers, students, and staff in order to make it a team effort.*

THE 3 - R'S

REDUCE

REUSE

RECYCLE

INTRODUCING SINGLE-STREAM RECYCLING



WHAT IS SINGLE STREAM RECYCLING?

The Bethlehem Area School District is changing and expanding its recycling program. We have adopted single stream recycling which means that all recyclables are mixed together.



HOW DOES IT WORK?



Bottles and cans can be mixed in the recycling bins with newspaper, office paper and cardboard. Cardboard will continue to be flattened. Beverage containers should be empty and food containers should be rinsed.

“Bottles and cans can be mixed in the recycling bins with newspapers, office paper, and cardboard.”

WHAT DOES THIS MEAN TO OUR DISTRICT?

By making recycling easier, we expect to significantly increase our recycling and reduce our waste costs. Recycling benefits the environment by saving energy and resources and reducing pollution and greenhouse gases emitted from landfills.

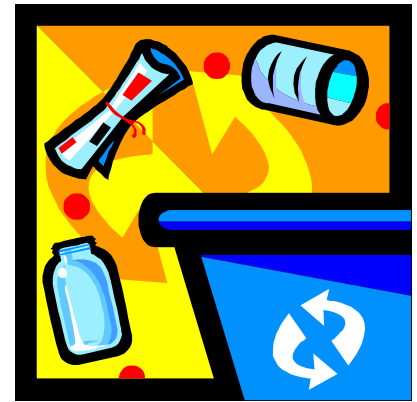




TYPES OF RECYCLING

In the past, there have been four (4) types of waste pickups at our schools. The different types were **refuse/trash, cardboard/mixed office paper, commingle, and fluorescent lamps/bulbs.**

With the new program in place, there will be only three (3) types of pickup. **Refuse/trash, single stream (all recyclables mixed together) and fluorescent lamps/bulbs.**



RECYCLING SEPARATION PROCEDURES

Recycling containers should be placed directly next to the trash containers to help implement the proper disposal of recycling in the correct containers.

Do **not** use any type of plastic bags in recycling containers.

Cardboard boxes should continue to be flattened before being placed in the recycling dumpster.





Accepted Single Stream Recycling Materials:



Mixed Office Paper



Envelopes



Non-Shiny Junk Mail and Fax Paper



Shiny Junk Mail



Bond Paper



Booklets/Pamphlets



Calculator Tape



Carbonless Forms (NCR Paper)



Computer Paper Including Laser Paper



Index Cards and Labels



Copier Paper & Wrappers (all colors, staples & paper clips ok)



Manila File Folders (all colors)



Scratch Paper with Cardboard Backing



Writing Tablets with Cardboard Backing



Flatboards (Cereal Box-Type Boxes)



Shredded Paper



Tabbed Dividers



Ledger Paper



Construction Paper



Catalogs



Magazines

Aluminum

Glass

Plastic

Post-Its

Tin Containers

Cardboard Boxes

Newspaper



Not Accepted:

Food Waste

Tyvek Envelopes

Drinking Glasses

Paper Towels

Plastic Table Ware

Plastic Bags

Plastic Cups

Carbon Paper

Styrofoam Packing Peanuts

Styrofoam Containers

Takeout Containers

Dishes

Garbage

Tissues

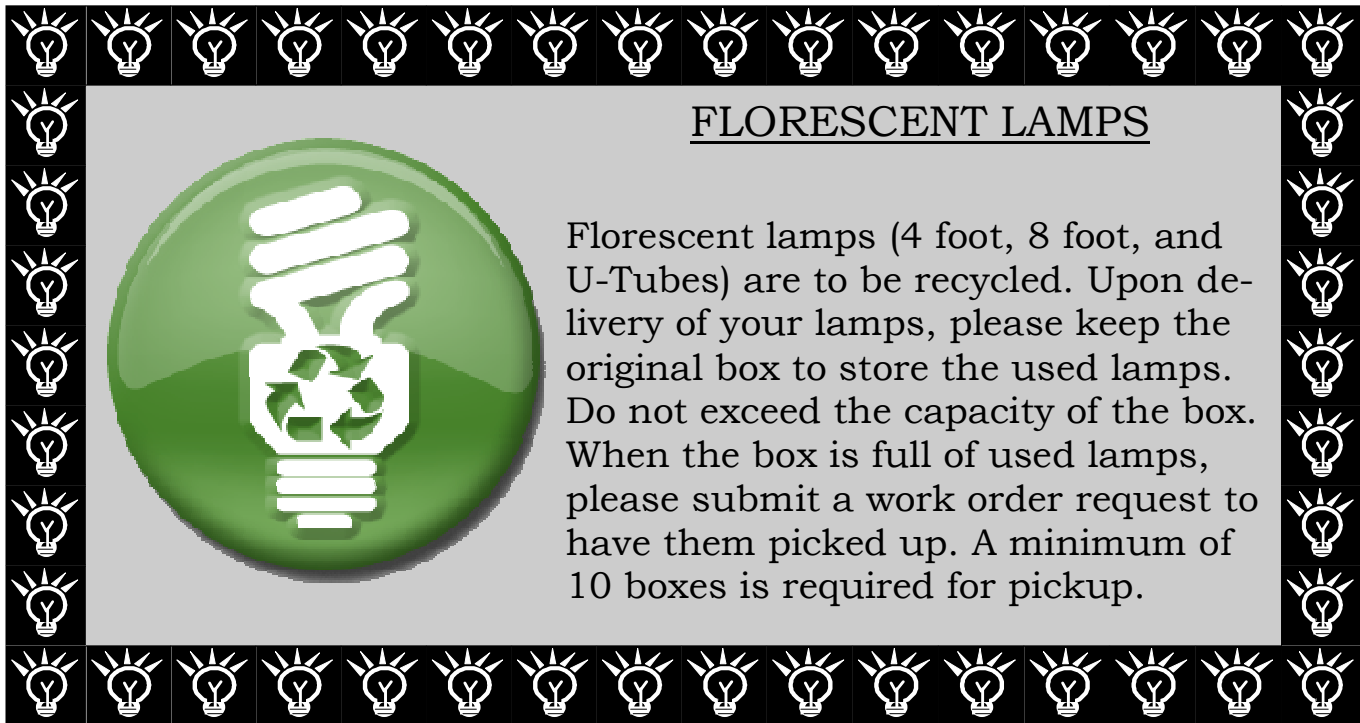
Packaging




Much of our trash can be recycled.
Making recycled products also:

- ◆ **Costs less**
- ◆ **Uses less energy to make**
- ◆ **Saves our natural resources**
- ◆ **Creates less air and water pollution**





FLORESCENT LAMPS



Florescent lamps (4 foot, 8 foot, and U-Tubes) are to be recycled. Upon delivery of your lamps, please keep the original box to store the used lamps. Do not exceed the capacity of the box. When the box is full of used lamps, please submit a work order request to have them picked up. A minimum of 10 boxes is required for pickup.

IMPORTANT RECYCLING REMINDERS



- ◆ Styrofoam and cardboard milk cartons are *not included* in Bethlehem Area School District's recycling program.



- ◆ If your garbage or recycling is not picked up, please call the Maintenance Department the same day. **Do not** wait several days. Please refer to the attached disposal pick up schedule for your building's refuse and single stream pick up days.
- ◆ Please call by 12:00 p.m. so we can contact the contracted service.
- ◆ During holidays, the contracted service will run a day behind schedule.
- ◆ Remind your staff and students not to block any dumpsters. **If they are blocked, they will not be emptied until the next scheduled day.**

RARITAN VALLEY DISPOSAL PICKUP SCHEDULE



LOCATION	REFUSE PICK-UP	CONTAINER SIZE	SINGLE STREAM RECYCLING
Basic 10-Month Service			
Weekly			
Asa Packer	WED	6 yard	8 yard - FRI
Broughal	MON,THURS	6 yard	8 yard - TU & FRI
Calypso	TUES	4 yard	8 yard - FRI
Clearview	WED,FRI	6 yard	8 yard - FRI
Donegan	MON,WED,FRI	6 yard	8 yard - FRI
East Hills	M,TU,W,TH,FRI	6 yard	6 yard (2) - FRI
Farmersville	MON,THURS	6 yard	8 yard - TUES
Fountain Hill	MON,THURS	8 yard	6 yard - TUES
Freedom	M,TU,W,TH,F	6 yard (2)	8 yard (4) - FRI
Freedom (Gym)	MON,WED,FRI	6 yard	~
Freemansburg	MON,THURS	8 yard	6 yard - FRI
Governor Wolf	THURS	8 yard	8 yard - FRI
Hanover	WED	6 yard	6 yard - FRI
James Buchanan	TUES	6 yard	8 yard - FRI
Liberty	M,TU,W,TH,F	6 yard, 8 yard	8 yard (2) - FRI
Liberty Klein Classroom Center	MON,WED,FRI	6 yard	8 yard - FRI
Lincoln	MON,THURS	6 yard	8 yard - TUES
Marvine	MON,THURS	6 yard	8 yard - FRI
Miller Heights	THURS	8 yard	6 yard - FRI
Nitschmann	M,TU,W,TH,F	6 yard	8 yard, 6 yard - FRI
Northeast	M,TU,W,TH,F	6 yard	8 yard (2) - FRI
SPARK	MON,THURS	6 yard	8 yard - FRI
Spring Garden	MON,THURS	6 yard	8 yard - FRI
Thomas Jefferson	THURS	8 yard	8 yard - TUES
William Penn	TUES	6 yard	8 yard - FRI
Basic 12-Month Service			
Education Center	THURS	6 yard	8 yard - FRI
Liberty Stadium	MON,THURS	6 yard (2)	8 yard - FRI
Liberty Cafeteria-Loading Dock	M,TU,W,TH,F	8 yard	~
Maintenance	WED	2 yard	4 yard - FRI
Transportation Department	THURS	4 yard	8 yard - FRI